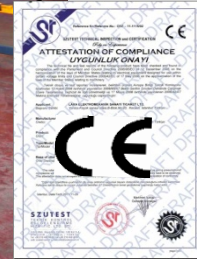


The fully automatic toroidal winder – **MAN2011**



MAN2011 – The Toledo serie -version 2012



The widest range in one design:

min-max id: 25.4 - 135 mm , max. od: 225 mm ,width range: 10 - 80 mm



REFERENCE Countries:



The digital Ruler



System Pressures.



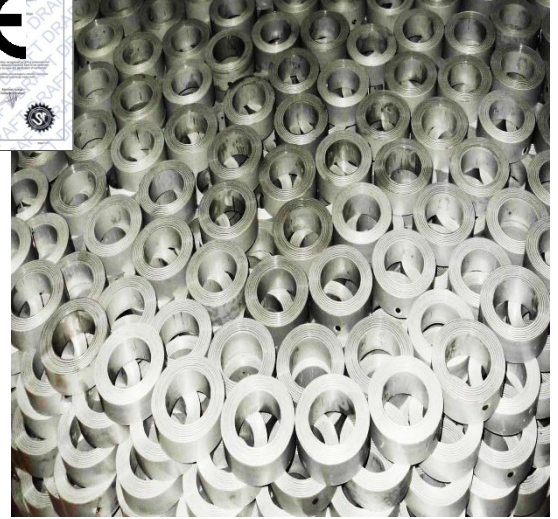
Languages



Wireless VPN connection.



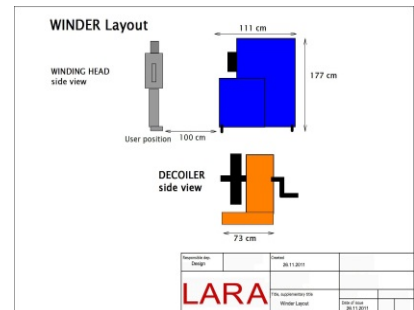
Winding Speed



The high speed toroidal Core Production Line

MAN2011 :

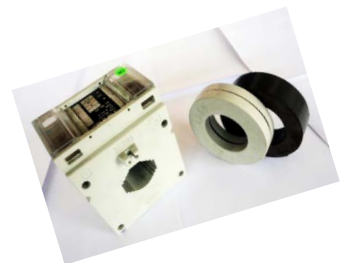
- The cost & time saving clever solution.
- Built-in Touchless Magnetostrictive Measuring System.
- User Planned Speed Modeling System.
- Panasonic Servo System.





What makes **MAN2011** different than other Core Winders?

- 1) Extreme wide winding range :
min-max id: 25.4 - 135 mm , max. od: 225 mm , width range: 10 - 80 mm
- 2) Built-in Touchless Magnetostrictive Measuring System:
designed by LARA Ltd. – extreme, precise and speedy.
- 3) It is an open system : the user can choose his own winding style and set all the data from the LCD screen according to the materials physical characteristics.
- 4) The PC-controlled Observation Module: The user can log on to the winder from his PC and observe the machine through the internet .
- 5) The easiest way to handle: The user can solve all problems and failures during the production by himself. Nevertheless if the user demands our assistance , our team is ready to assist you in the shortest time .
- 6) Parts of Industry-leading brands have been used during the assembling of the winder. (Panasonic, Siemens, Schneider, Fimer, SMC etc.)
- 7) Menu options in English - Spanish - German - Portuguese – Czech -Russian....languages
- 8) Core database which helps very easy to select the right winding parameters.
- 9) According each different core dimension automatic pressure regulation will be done with the pressure regulators.
- 10) CE approved.



Contact details :

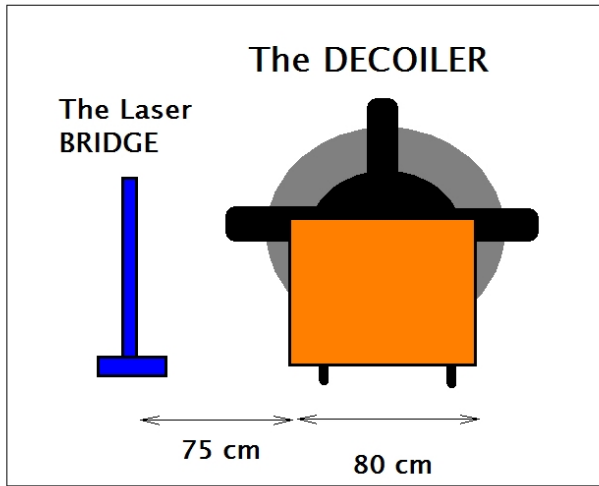
LARA Core winding Solutions & Technologies

email: info@laraelectromechanical.com

<http://www.laraelectromechanical.com>

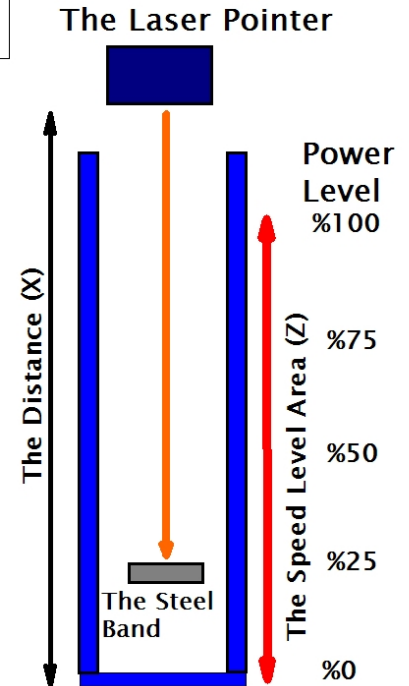
tel: +90 532 247 46 28

The case sensitive Decoiler



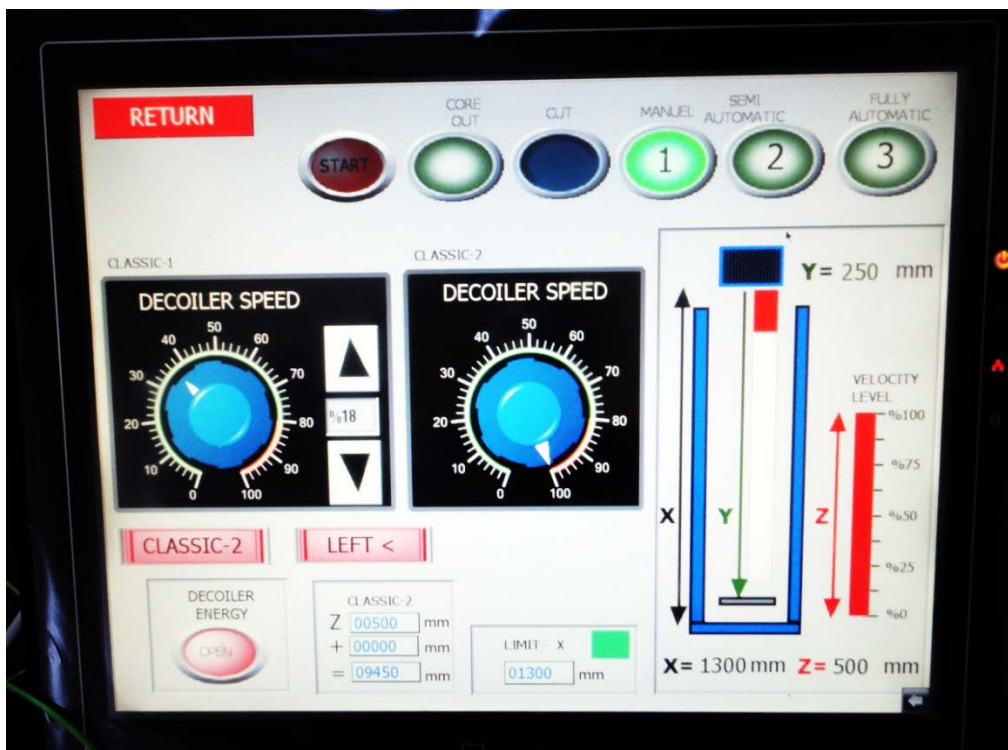
The Laser Bridge
Side View

The ASC sytem (The Automatic Speed Controller)

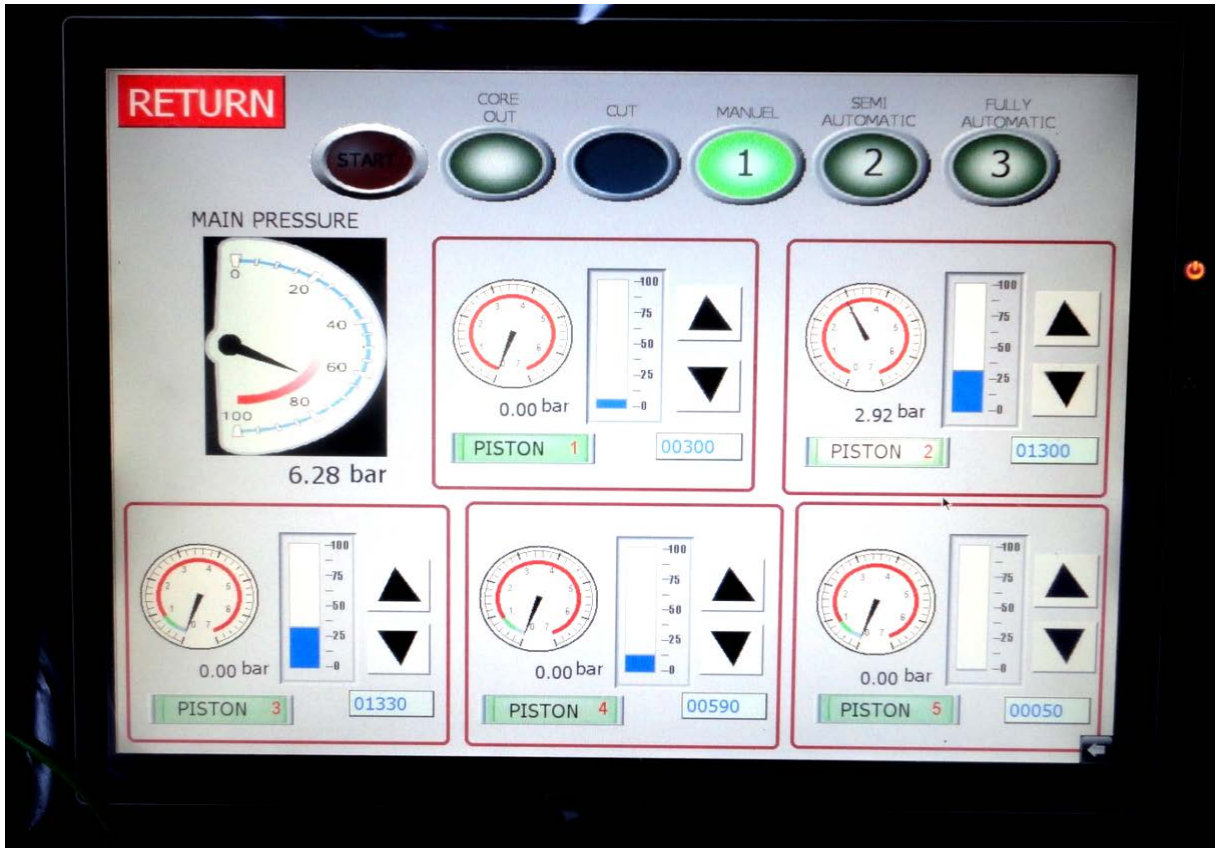


What is the purpose of the ASC system ?

The ASC system has been developed in order to control the speed of the decoiler automatically. The speed will be adjusted according the situation from the PLC controller . The turn frequency will be always optimised. It is a energy saving speed modelling system which is developed by LARA.



Piston Pressure Regulation Screen

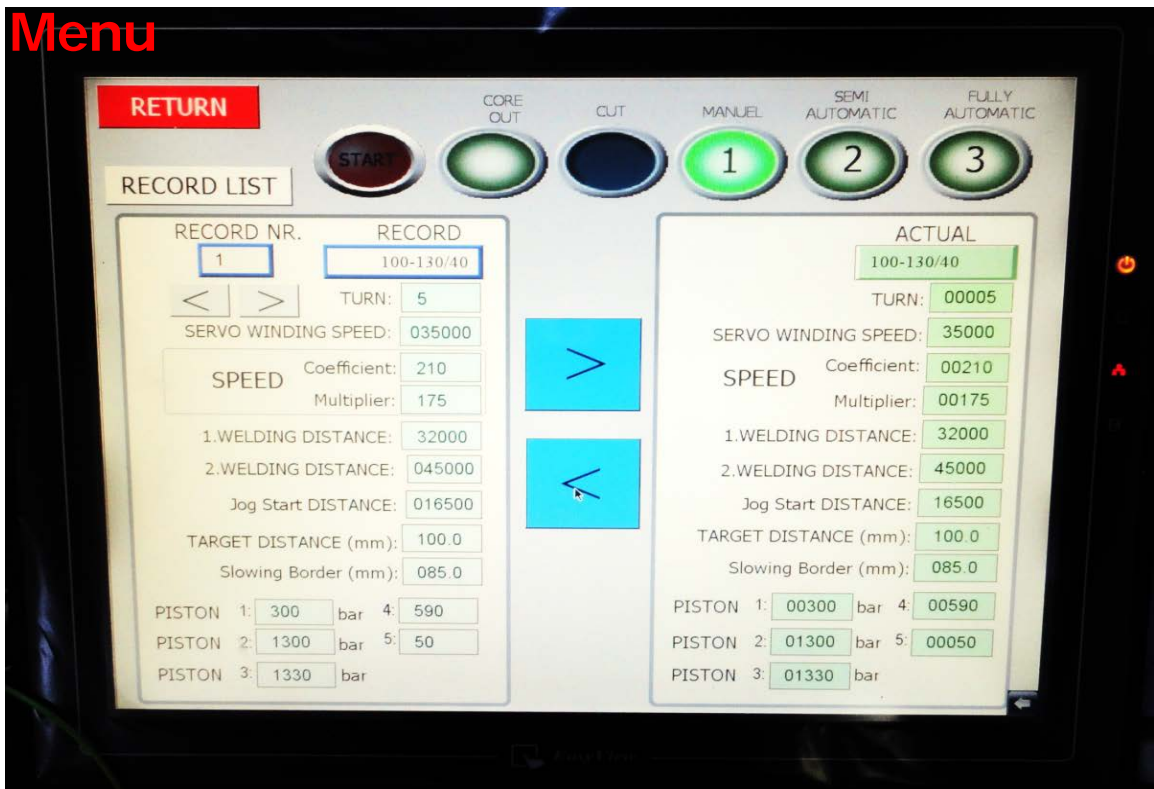


Piston Pressure Regulation from LCD screen:

Pressure will be regulated with the SMC-Regulator with extreme precision.

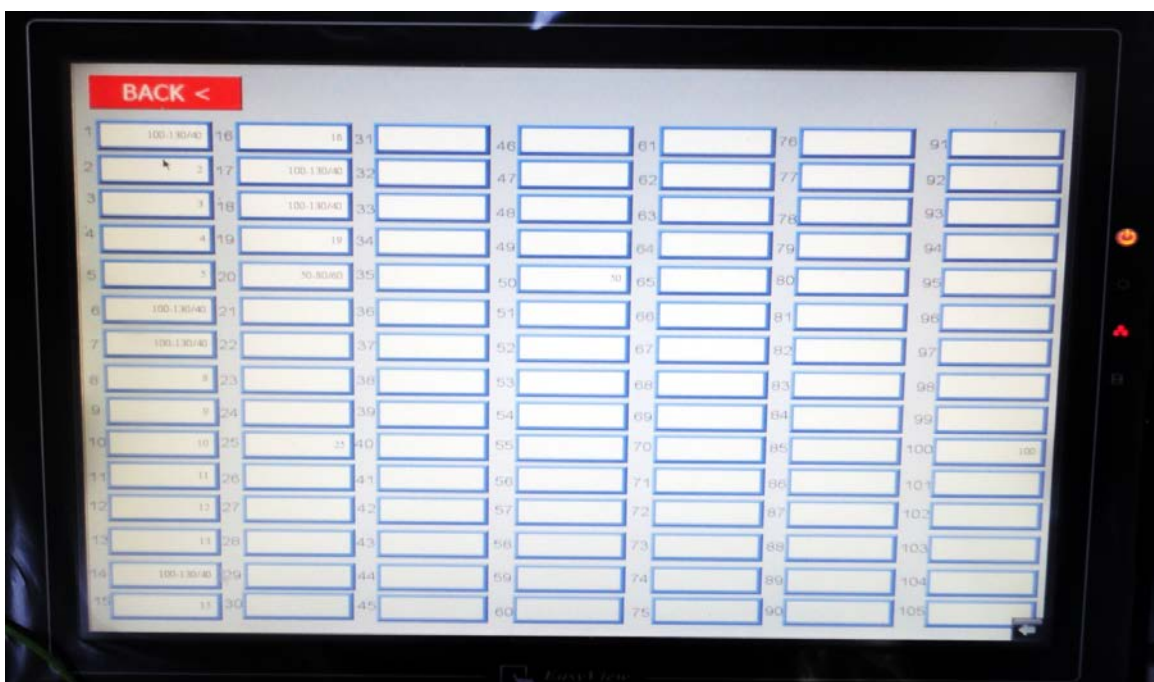


The Userfriendly Core Setup Database Menu



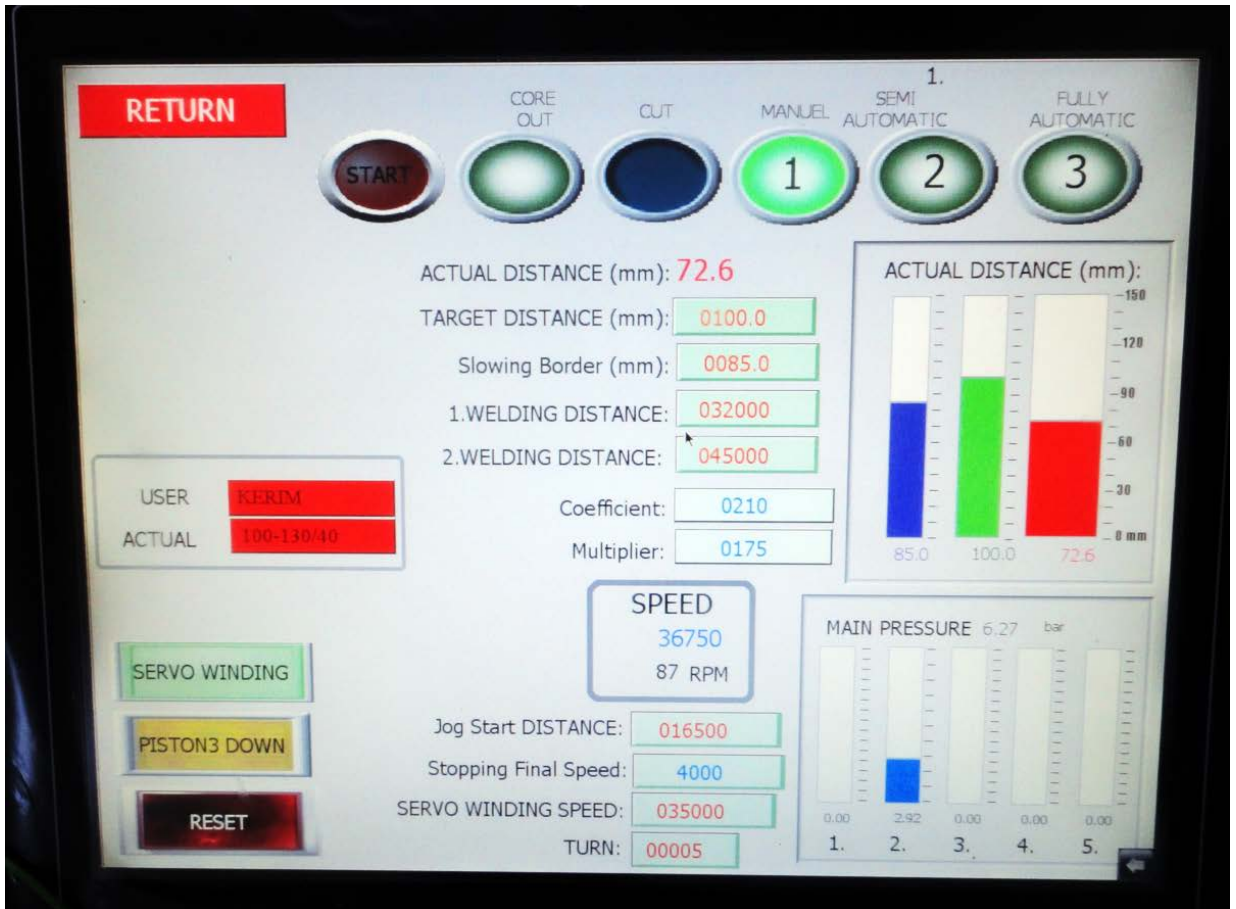
Storing of different Core sizes in the Database:

The user can select from the database the core size, load it to the memory and can start the production (Piston pressures are added too).





The real-time distance measurement screen



Winding with the digital Ruler:

The user can observe from the screen the real-time core measures.



REFERENCE Countries:



Argentina
Buenos Aires



USA
Georgia
Philedelphia
Washington-Illinois



Germany
Stuttgart



New Zealand
Christchurch



Czech Republic
Ostrava



Italy
Milano



Russian Federation
Samara
Yekaterinburg
Moscow



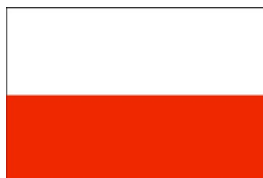
INDIA
Mumbai
Maharashtra



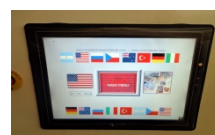
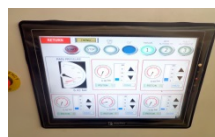
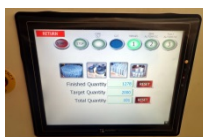
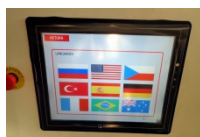
Mexico
Apodaca



Turkey
Kocaeli



Poland
Myszkow



Contact details :

LARA Core winding Solutions & Technologies

email: info@laraelectromechanical.com

<http://www.laraelectromechanical.com>

tel: +90 532 247 46 28